

SAIRO

101

# Course Syllabus (Agenda):

## Introductions

- Name, department, length of service in UCLA Student Affairs; specific questions for today

## Course Content

- What is SAIRO?
- Who works in SAIRO?
- How does SAIRO fit within the Student Affairs Organization?
- What type of work does SAIRO do?
- How can SAIRO assist your department?

## Next Steps

- Upcoming office hour sessions & Mini-session topics
- Follow-up email from today
- SAIRO contact information

# What is SAIRO?

## Student Affairs Information & Research Office

SAIRO is the research and assessment office within UCLA's Student Affairs organization. The purpose of our office is to...

keep Student Affairs staff and other UCLA constituents up to date about the backgrounds, experiences, and needs of students;



assist Student Affairs departments in assessing their services;



and contribute to campus- and UC system-wide research and assessment efforts.



# Who works in SAIRO?



Director  
Kristen McKinney



Coordinator,  
Assessment Support and Capacity Building  
Allison Kanny



Assessment Analyst  
Danielle Acheampong



Graduate Student Researcher (.5 FTE)  
TBD



Graduate Student Researcher (.5 FTE)  
Tiera Tanksley



Undergraduate Research Partnership  
Initiative Participants (.25 FTE/student)



Coordinator,  
Student Research and Surveys  
Aye Htut-Rosales



Graduate Student Researcher (.5 FTE)  
Esthela Chavez



Graduate Student Researcher (.5 FTE)  
TBD

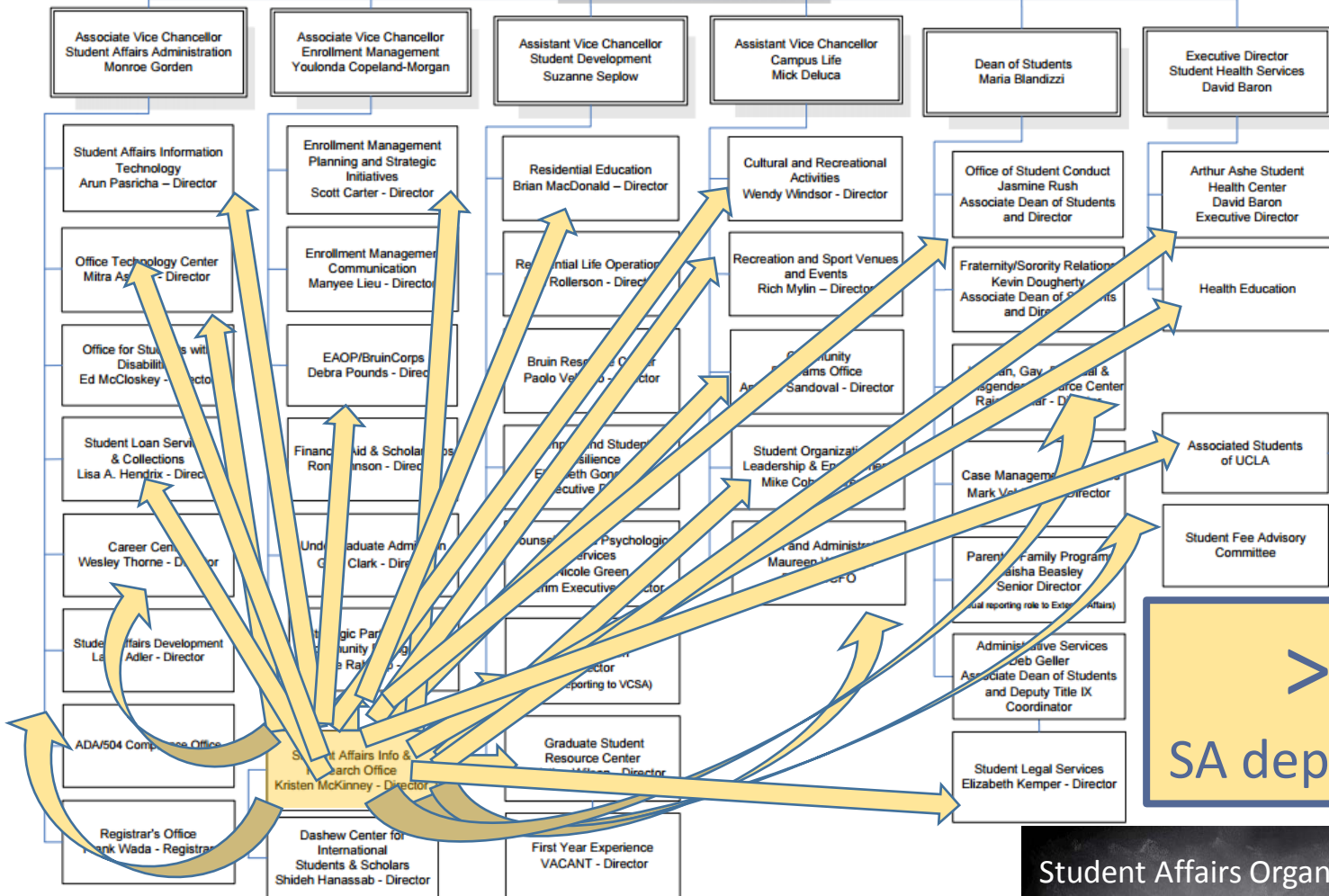


Undergrad Student Assistant (.25 FTE)  
Vanessa Lopez

# How does SAIRO fit within the Student Affairs Organization?

**UCLA** STUDENT AFFAIRS

**Vice Chancellor Student Affairs**  
Janina Montero



**>25**  
SA departments

Student Affairs Organizational Chart

# How does SAIRO fit within the Student Affairs Organization?

## UCLA Student Affairs

Student Affairs supports the academic success of all UCLA students, fosters their intellectual, personal, social and professional development in preparation for the entirety of their lives, and contributes to enhancing the quality of campus life, the educational environment, and our students' relationship with

Priority 1: Ensuring Student Welfare: Diversity, Climate and Wellness

- Identity Awareness -** Understand and value the multiple dimensions of self
- Diversity and Climate -** Understand and interact effectively with others in a complex and evolving environment
- Healthy Self-Management -** Develop practical skills and attitudes to promote personal well-being

Priority 2: Meeting Students Where They Are: Leadership Development

- Global Citizenship -** Practice responsible citizenship in our global society
- Career & Life Purpose -** Develop thoughtful and deliberate educational and career strategies
- Leadership & Team Skills -** Work effectively in various roles within groups

Priority 3: Supporting the Academic Enterprise: Enrollment Management and Student Success

- Enrollment Management -** Build and support a strong pipeline of highly talented students
- Educational Affordability -** Identify and cultivate financial support systems
- Academic Success -** Provide a range of support services and opportunities to ensure students are able to engage effectively with educational experiences

Priority 4: Effectively Steward Resources

- Constituent Service -** Provide caring and comprehensive services to SA constituents



*The mission of the Student Affairs Information and Research Office (SAIRO) is to support the learning, development, and success of all UCLA students by: 1) Developing the capacity of the Student Affairs organization and other stakeholders to collect, interpret, and utilize data to enhance the quality of students' educational experience and campus environment; 2) Providing reliable, timely, and useful information about students and their experiences; and 3) Helping Student Affairs departments assess and document the effectiveness of their programs, services, and practices.*

Our strategy for fulfilling this mission (and the markers by which we can measure our success in doing so)...

**Departmental Outcome 1:**  
Develop the capacity of the Student Affairs organization and other stakeholders to collect, interpret, and utilize data to enhance the quality of students' educational experience and campus environment.

**Departmental Outcome 2:**  
Provide reliable, timely, and useful information about students and their experiences.

**Departmental Outcome 3:**  
Help Student Affairs departments assess and document the effectiveness of their programs, services, and practices.

# How does SAIRO fit within the Student Affairs Organization?

## UCLA Student Affairs

Student Affairs supports the academic success of all UCLA students, fosters their intellectual, personal, social and professional development in preparation for the entirety of their lives, and contributes to enhancing the quality of campus life, the educational environment, and our students' relationship with

**Priority 1: Ensuring Student Welfare: Diversity, Climate and Wellness**

**Priority 2: Meeting Students Where They Are: Leadership Development**

**Priority 3: Supporting the Academic Enterprise: Enrollment Management and Student Success**

**Priority 4: Effectively Steward Resources**

**Identity Awareness -**  
Understand and value the multiple dimensions of self

**Diversity and Climate -**  
Understand and interact effectively with others in a complex and evolving environment

**Healthy Self-Management -**  
Develop practical skills and attitudes to promote personal well-being

**Global Citizenship -**  
Practice responsible citizenship in our global society

**Career & Life Purpose -**  
Develop thoughtful and deliberate educational and career strategies

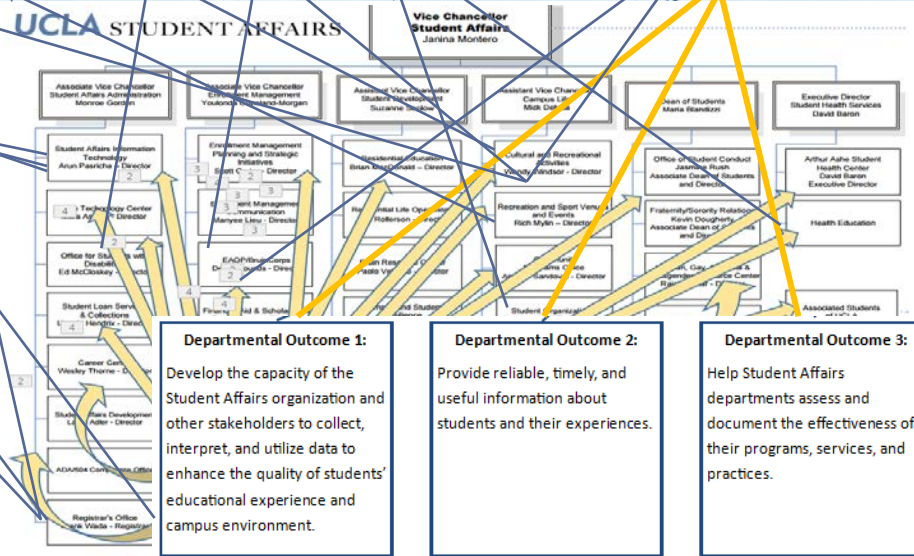
**Leadership & Team Skills -**  
Work effectively in various roles within groups

**Enrollment Management -**  
Build and support a strong pipeline of highly talented students

**Educational Affordability -**  
Identify and cultivate financial support systems

**Academic Success -**  
Provide a range of support services and opportunities to ensure students are able to engage effectively with educational experiences

**Constituent Service -**  
Provide caring and comprehensive services to SA constituents



The "Big Picture"

# What type of work does SAIRO do?



Director  
Kristen McKinney



Coordinator,  
Assessment Support and Capacity Building  
Allison Kanny



Assessment Analyst  
Danielle Achompong



Graduate Student Researcher (5 FTE)  
TBD



Graduate Student Researcher (5 FTE)  
Tara Lankley



Undergraduate Research Partnership  
Initiative Participants (25 FTE/Student)



Coordinator,  
Student Research and Surveys  
Aye Htut-Rosales



Graduate Student Researcher (5 FTE)  
Esthela Chavez



Graduate Student Researcher (5 FTE)  
TBD



Undergrad Student Assistant (25 FTE)  
Vanessa Lopez

One-on-one  
Consultations

- Departmental presentations by request
- Assessment plan review
- Drop-in Office Hours

- Data requests
- Program review consultation

Print/Web Resources

- Assessment one-pagers
- Flowcharts for beginning an assessment

- Survey findings briefs
- Profile reports on student cohorts
- Qualitative study reports

Structured Learning  
Opportunities

- CASA Curriculum
- Assessment Forums
- Data Hour

- Bruins in Brief
- Departmental presentations by request

Organizational  
Support/Logistics

- SA Annual Report management/reporting
- Baseline coordination/support

- Campus-wide survey administration

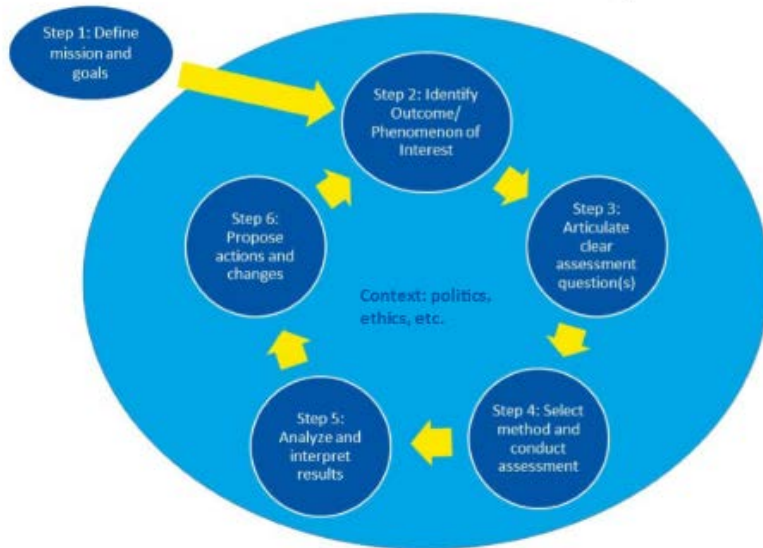


# How can SAIRO assist your department?

How can your department get ready to conduct meaningful assessments this year?

- ...checklists for completing the SA Annual Report
- ...outcome mapping activities
- ...process charts for submitting Baseline surveys
- ...review of the assessment cycle

## The Assessment Cycle



**Join us for our Office Hours Mini-Session  
“Tools for Beginning to Think about Assessment”**

Wednesday, 11/9 11-11:30am  
Student Activities Center, Conference Rm. 3

Tools for Beginning to Think about Assessment

# How can SAIRO assist your department?

SAIRO administers the following campus-wide surveys:

Survey	Instruments						
	2016	2015	2014	2013	2012	2011	2010
<a href="#">CIRP Freshman Survey*</a>							
<a href="#">Diverse Learning Environments Survey (DLE)</a>							
<a href="#">Graduating Senior Survey (GSS)</a>							
<a href="#">Interfaith Identity, Experiences, and Attitudes Longitudinal Survey (IDEALS)</a>							
<a href="#">National College Health Assessment (NCHA)</a>							
<a href="#">Student Affairs Graduate and Professional Student Survey (GPSS)</a>							
<a href="#">Transfer Student Study (TSS)</a>							
<a href="#">University of California Undergraduate Experiences Survey (UCUES)</a>							

\*The CIRP Freshman Survey has been administered on UCLA's campus biennially since 1974.

To view each survey instrument, access the online version of this table at: <http://www.sairo.ucla.edu/Reports-Data-by-Survey>

## Join us for our Office Hours Mini-Session “Overview of SAIRO Survey Data”

Wednesday, 11/30 2-2:30pm  
Murphy Hall, Rm. 1136

# How can SAIRO assist your department?

Did you know that you can request specific sets of data collected from any of the campus-wide surveys SAIRO administers?

SAIRO uses an online data request form to field your requests:  
(<http://www.sairo.ucla.edu/Online-Data-Request-Form>)

*Care to learn more, practice submitting a request, or explore what data you'd like to use?*

**Join us for our Office Hours Mini-  
Session "How to Request SAIRO Data"**

Tuesday, 12/13 11-11:30am  
Student Activities Center, Conference Rm. 3

## Next Steps

### Upcoming office hour sessions & Mini-session topics

- TODAY! 1-3pm; SAC, Conference Rm. 5
  - Mini-session “Condensed SAIRO 101”
- 11/9 11am-1pm; SAC, Conference Rm. 3
  - Mini-session “Tools for Getting Started with Assessment”
- 11/30 2-4pm; Murphy Hall Rm. 1136
  - Mini-session “Overview of SAIRO Survey Data”
- 12/13 11am-1pm; SAC, Conference Rm. 3
  - Mini-session “How to Request SAIRO Data”

### Follow-up email from today

- Make sure you signed in!

### SAIRO contact information

- Allison Kanny ([akanny@saonet.ucla.edu](mailto:akanny@saonet.ucla.edu))
- SAIRO website: <http://www.sairo.ucla.edu/>