

Challenges in Assessment

-CASA Session 6-



Session 6 Overview

- Mid-course check-in
- Session 5 assessment results
- Brief peer feed-back
- Discussion of current challenges
- Session 6 learning outcomes
- Overview of SAIRO's new website and how to use it in assessment
- **BREAK**
- 10am: Meet mentors
- For Next Session...

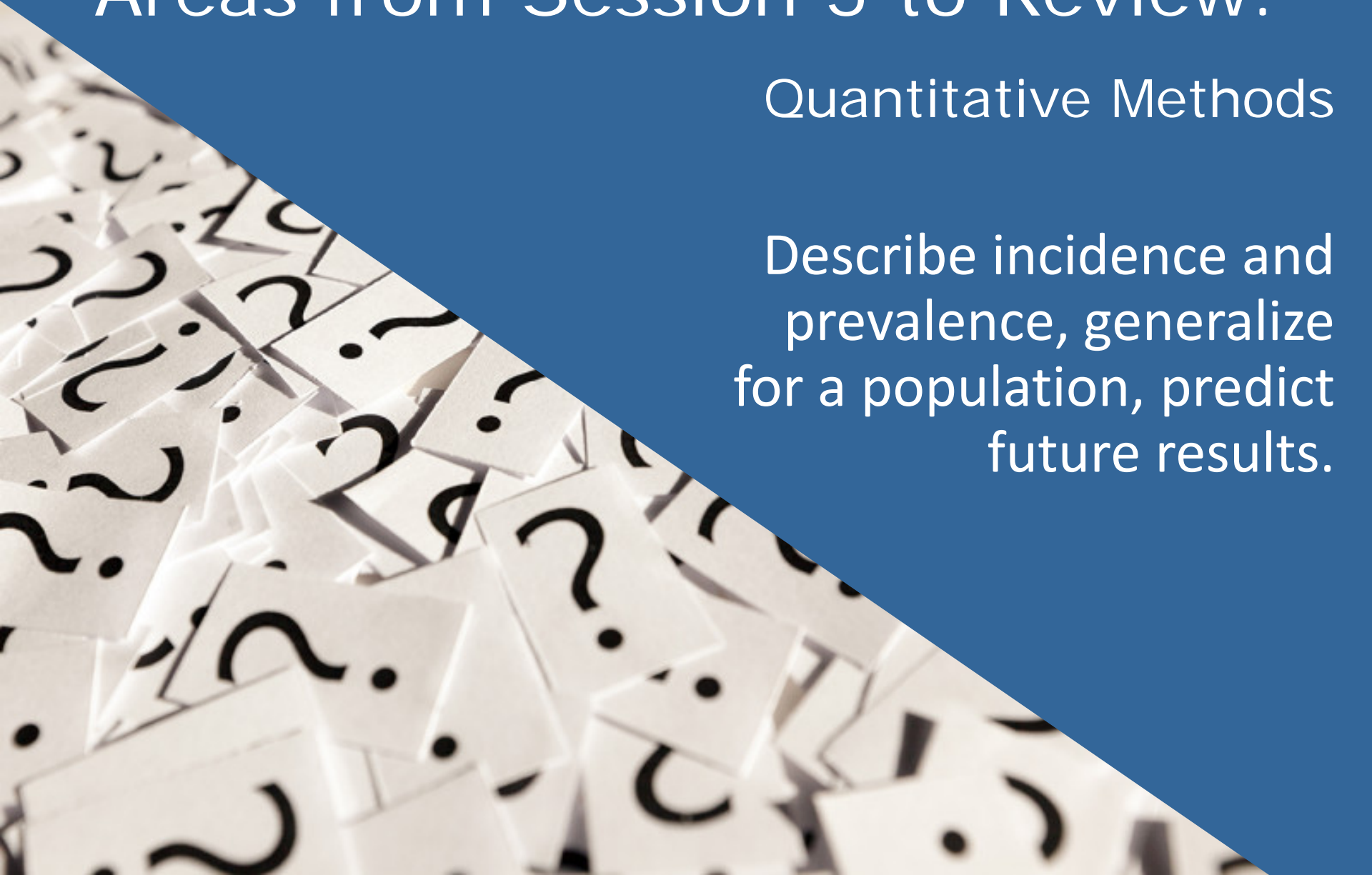
Mid-course Check-in



Areas from Session 5 to Review:

Quantitative Methods

Describe incidence and prevalence, generalize for a population, predict future results.



Assessment Plan Peer Feedback

At this point in the curriculum, you should have the following assessment plan sections **fully drafted** OR **partially outlined/notated**:

Assessment Purpose

- Assessment Plan Design
- Background and Purpose
- Assessment Question(s)
- Context and Stakeholders

Methods and Implementation

- ✓ Assessment Method
- ✓ Resources
- ✓ Implementation and Design

Planned Analysis and Reporting

- Planned Analysis
- Plan for Reporting
- Implications for Improvement

1) Switch Assessment Plans with a partner

- 1) Rate each section using the assessment plan rubric.
- 2) Provide written notes/suggestions in space provided.

THEN...

2) Return Assessment Plans and Feedback Sheet

- 1) Discuss your ratings with your partner.
- 2) Identify ways each of you can improve these sections.
- 3) Authors make notes for themselves regarding next steps.



15 minutes

End



10 minutes

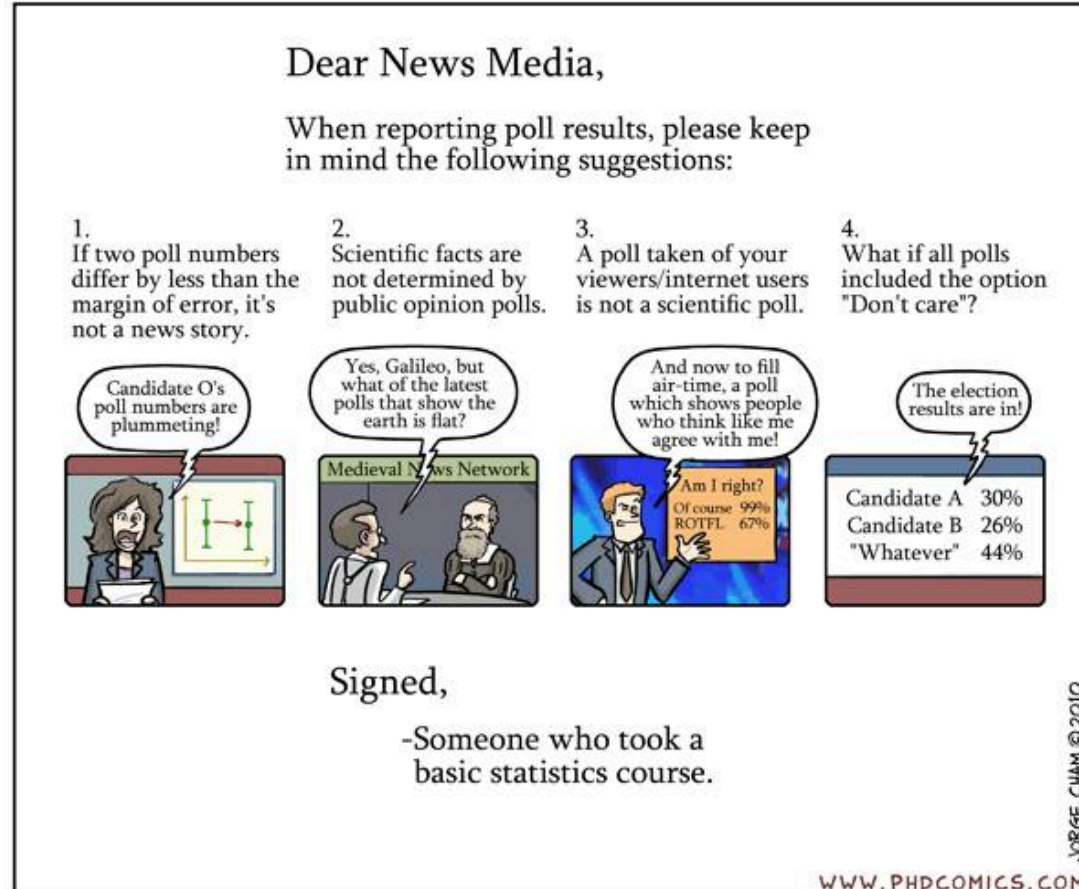
End

Think-pair-share:

How would you briefly summarize or describe your project to a stakeholder or someone not familiar with your project?

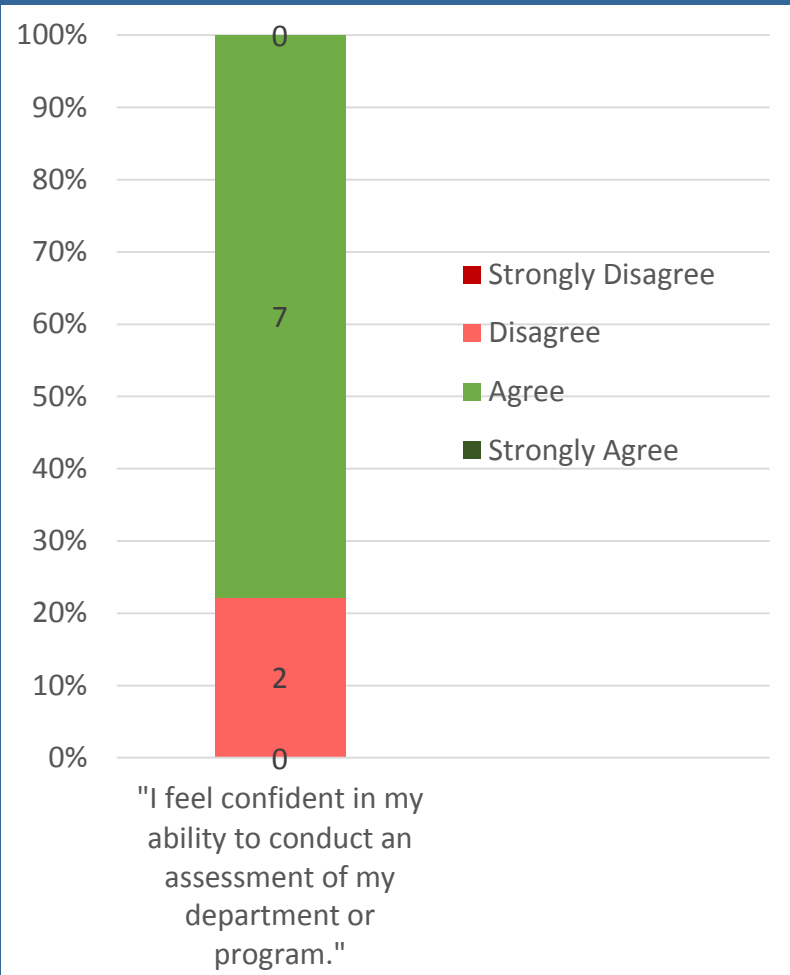
Test your 'elevator pitch' on your partner.

- ~~Review of themes from mid-course check-in~~
- ~~Session 5 assessment results~~
- ~~Peer feed-back~~
- ~~Discussion of current challenges~~
- Session 6 learning outcomes
- Overview of SAIRO's new website and how to use it for assessment
- **BREAK**
- 10am: Meet mentors
- For Next Session...



Where we are, where we are going...

Confidence Barometer



Today's Learning Outcomes

After today, you should be able to:

- Understand SAIRO's support role/procedures
- Practice presenting assessment plans to an outside audience

But there will NOT be an assessment today.



BUILDING A CULTURE OF ASSESSMENT

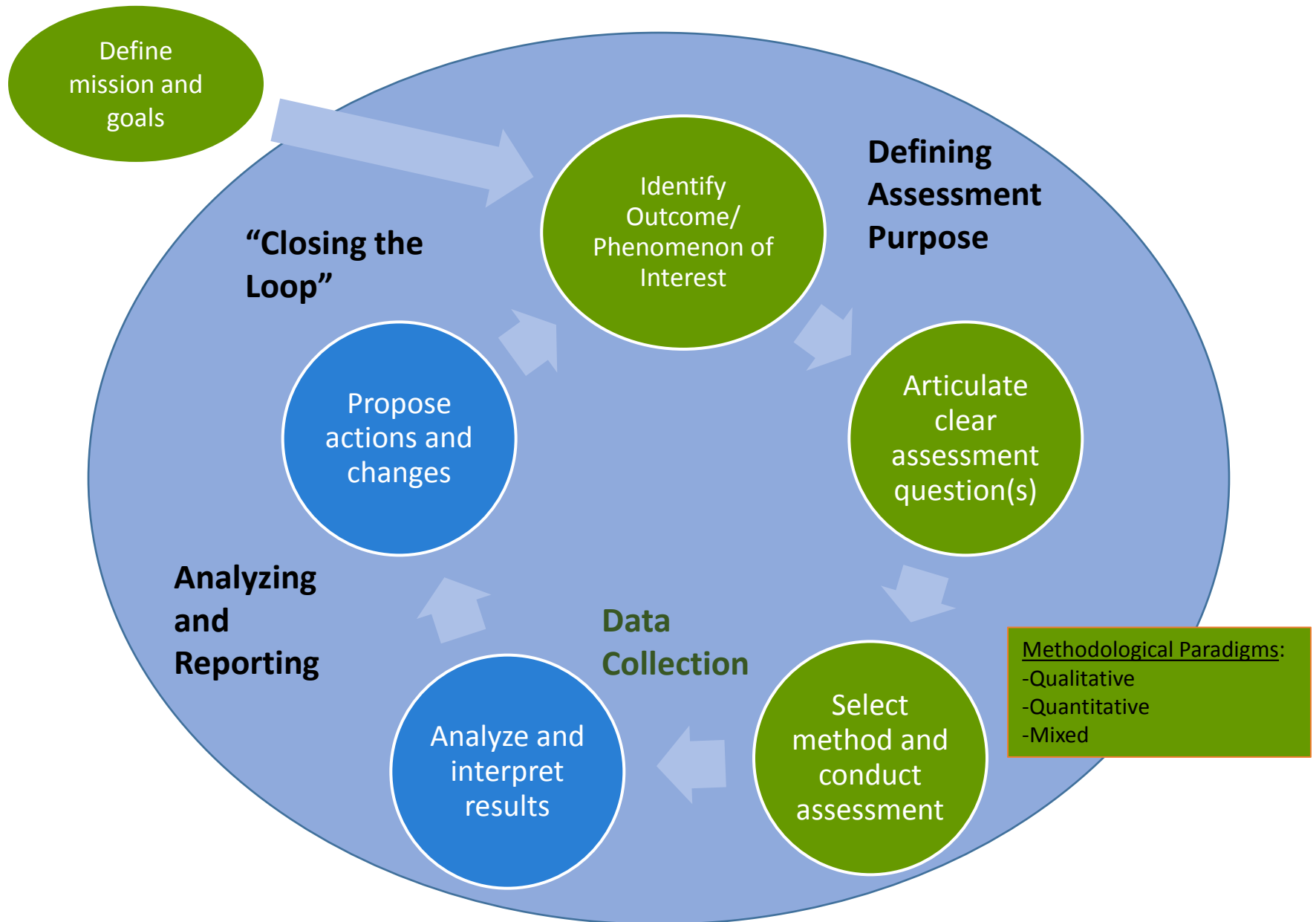
WELCOME TO SAIRO



How to find and use Resources

<http://www.sairo.ucla.edu/>

The Assessment Cycle



- ~~Review of themes from mid-course check-in~~
- ~~Session 5 assessment results~~
- ~~Peer feed-back~~
- ~~Discussion of current challenges~~
- ~~Session 6 learning outcomes~~
- ~~Overview of SAIRO's new website~~

• BREAK

- 10am: Meet mentors
- For Next Session...

I'm not judgmental. I just have excellent assessment skills.



som^{ee}cards
user card

| Mentee | Mentor |
|-------------------------|---------------------|
| LaWanda Bowles-Costello | Danielle Acheampong |
| Jeremy Chance | Aye Htut-Rosales |
| Edgar Jimenez | Amy Woodbridge |
| Norma Kehdi | Esthela Chavez * |
| Lori Marshall | Danielle Acheampong |
| Megan Van der Toorn | Tiera Tanksley |
| Nickey Woods | Kristen McKinney |
| Kelly Zuniga | Lauren Illano |

In your group (or with your mentor):

- 1) Mentor-mentee introductions
- 2) Exchange contact information
- 3) Mentee- “Elevator pitch “ describing project
- 4) Mentor feedback/questions & support
- 5) Be ready to share out to the entire class on the following questions:
 - a) How clearly can you explain your project to someone who isn’t familiar with it?
 - b) Are there any consistent challenges/hang-ups in planning your assessment?
 - c) What strategies might help?

**WE WILL RECONVENE AS
A CLASS AT 11:00am.**

For next session:

By next month's session, you should have the following assessment plan sections **fully drafted** OR **partially outlined/notated**:

Assessment Purpose

- Assessment Plan Design
- Background and Purpose
- Assessment Question(s)
- Context and Stakeholders

Methods and Implementation

- Assessment Method
- Resources
- Implementation and Design

Planned Analysis and Reporting

- Planned Analysis
- Plan for Reporting
- Implications for Improvement



Remember to bring a hard copy of these sections next class!

With coworkers, friends, course mates, run a pilot study with your instrument drafts.

For support :

SAIRO Office Hour

Monday, March 20, 2017

2:00 PM - 4:00 PM

UCLA Murphy Hall 1136

and/or

**Schedule a Meeting with a
Danielle or your mentor**